



BALLOON

Stratospheric Balloon for mechanism supplier

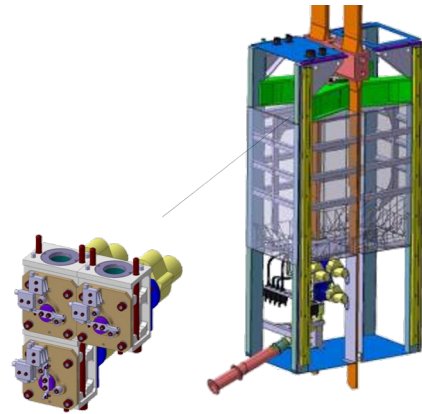


Equipment for CNES stratospheric balloons (more than 20 successful flights).

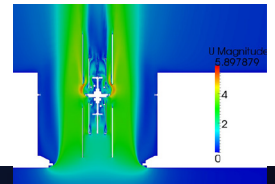
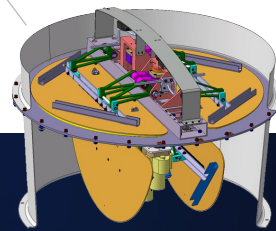


Ballast structure

- ✓ Force sensor (with load-limit function)
- ✓ Ballast valve



Gas valve (fail-safe device)



Gas valve characteristics

T° range
-110/+50°C

Pressure
1 1050 hPa

Mass
9,8 (or 12) kg

Flush section
590 (or 1190) cm²

Safety
Fail-safe

Leak rate
Conform to CNES spec

Actuation time
< 12 s

Gas He or H
OK





BALLOON

HAPS

